

TECWARE

omni hub

Quick Start Guide

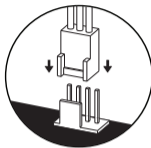
Hub Installation

STEP 1 : Connect ARGB devices to Omni Hub.

STEP 2 : Connect Controller's SATA Power to PSU.

Connect ARGB header to motherboard. (if applicable)

Connect Case LED/Reset Button connector.



Note : Hold LED / reset button for 3sec to toggle between onboard controller mode and motherboard sync mode.

Controller Installation

