



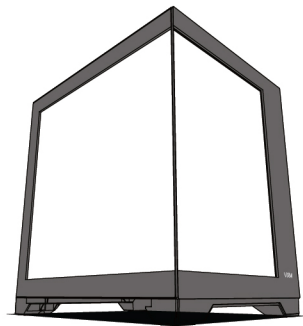
# VXM **EVO**

DUAL CHAMBER MATX TEMPERED GLASS CASE

Quick Start Guide

# Contents

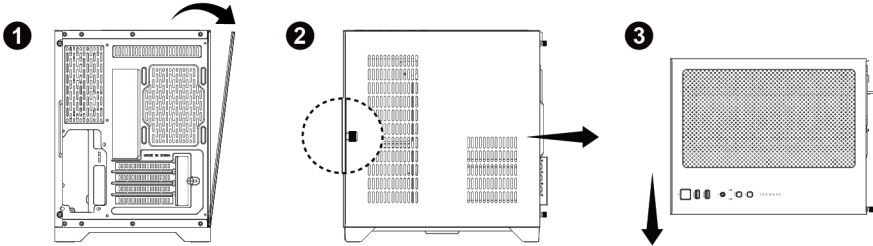
|                                       |      |
|---------------------------------------|------|
| ◆ Specification .....                 | p.01 |
| ◆ Panel Removal .....                 | p.02 |
| ◆ Front Panel I/O Connections .....   | p.03 |
| ◆ Component List .....                | p.04 |
| ◆ Motherboard Installations .....     | p.05 |
| ◆ SSD / HDD Installation .....        | p.06 |
| ◆ GPU & PSU Installation .....        | p.07 |
| ◆ CPU Cooler / Fan Installation ..... | p.08 |
| ◆ Package Contents & Warranty .....   | p.09 |



## Specifications

| Type                      | Specification               |
|---------------------------|-----------------------------|
| Motherboard Support       | mATX, ITX                   |
| Dimensions                | 348(L) x 280(W) x 377(H) mm |
| 3.5" HDD Drive Bay        | 1                           |
| 2.5" SSD Drive Bay        | 2                           |
| Expansion Slots           | 4                           |
| Maximum GPU Length        | 330mm                       |
| Maximum CPU Cooler Height | 157mm                       |
| Maximum PSU Length        | 160mm                       |

## Panel Removal



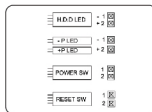
1) Pull the tab with controlled force and the side TG panel should pop out as shown

2) Remove the side panel and remove the screw as shown.

3) Slide the front TG Panel following this direction.

*\*Important note: Please remove the side glass panel first before attempting to remove front glass panel.*

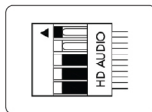
## Front Panel I/O Connections



### BUTTONS AND ACTIVITY LIGHTS

---

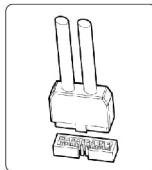
These cables are connected to the motherboard for the power button ( power sw ), reset button, HDD LED, and power LED ( P+ / P- ).



### HD AUDIO

---

This connector attaches to your sound card or motherboard and is used to provide the front panel mic input and headphone output.








### USB 3.0 CONNECTOR

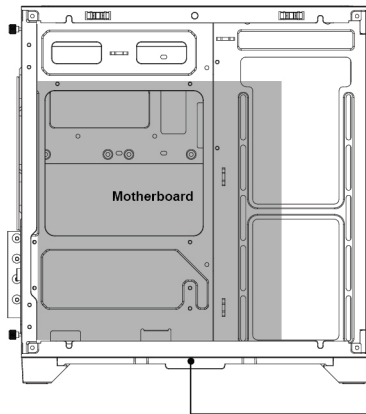
---

This cable connects to the USB 3.0 header on the motherboard to enable the front USB 3.0 ports.

## Component List

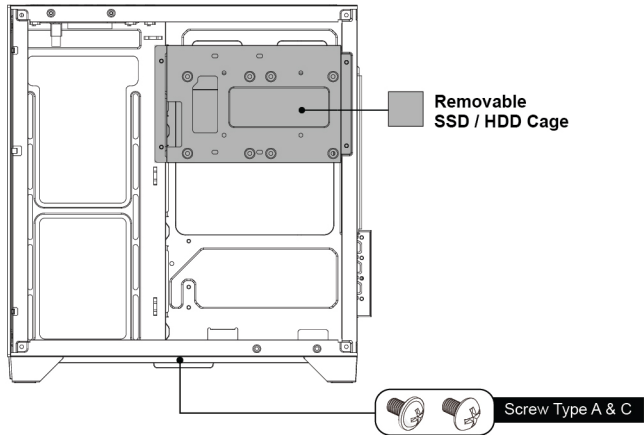
| VISUAL  | ITEM                            | QTY | APPLICATION  |
|---|---------------------------------|-----|--|
| A  | Motherboard & SSD screw         | 10  | Motherboard and 2.5 hard drive installation                            |
| B  | Motherboard standoff            | 3   | Motherboard installation   |
| C  | HDD mount screw                 | 4   | 3.5 hard drive installation  |
| D  | PSU & Rear expansion slot screw | 5   | Power supply installation<br>Mounting of GPU and other expansion cards |
| E  | Cable tie                       | 5   | Cable management   |

## Motherboard Installation



Screw Type A & B

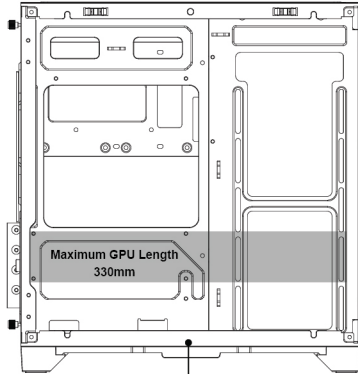
## SSD / HDD Installation



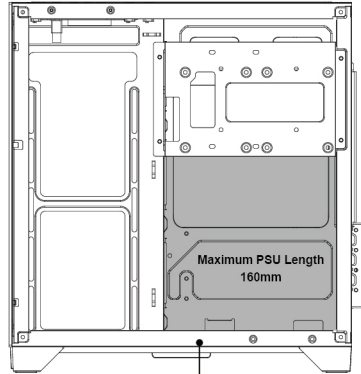


## GPU & PSU Installation

Graphics Processing Unit and other expansion cards



Power Supply Unit Installation



Screw (Type D)

## CPU Cooler / Fan Installation

**Rear:**  
Supports 1x 120mm  
ARGB Fans (Included)



Up to 157mm  
CPU Cooler  
Height



**Side:**  
Supports 2x 120mm  
ARGB Fans (Included)  
Up to 240mm Radiator



**Bottom:**  
Supports up to 2x 120mm  
Fans (Optional)

## **Package Contents**

- 1 x TECWARE VXM EVO Case
- 1 x Bag of Accessories

## **Warranty**

- 1 Year. Please contact your local distributor for support.

T E C W A R E

[www.tecware.co](http://www.tecware.co)