

T E C W A R E

ECLIPSE

ARGB LCD LIQUID CPU COOLER

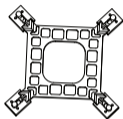
Quick Start Guide

Contents

- ◆ Components List----- p.01-02
- ◆ Radiator/Fan Installation ----- p.03
- ◆ Thermal Compound Application ----- p.04
- ◆ INTEL Installation ----- p.05
- ◆ AMD Installation ----- p.06
- ◆ Pump, LCD Screen & Fans Installation ----- p.07

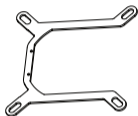
Components List

A INTEL Mounting Backplate



x1

B INTEL Mounting Bracket



x1

C AMD Mounting Bracket



x1

D Thermal Paste



x1

E Spring Screw



x4

F INTEL Standoff Screw



x4

Components List

G AMD Mounting Clip



x2

H INTEL LGA 2011 Screw Stud



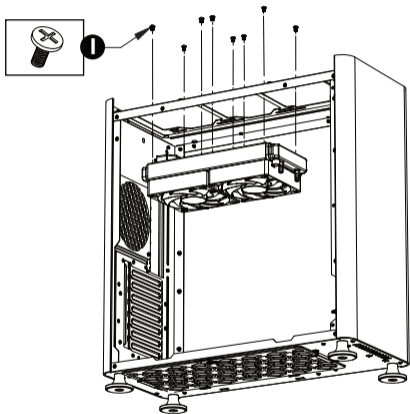
x4

I Radiator Screw



ECLIPSE 240 X8
ECLIPSE 360 X12

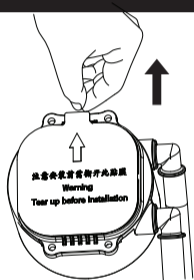
Radiator/Fan Installation



1. Install Fans onto Radiator using Screws. (Pre-installed)
2. Install Radiator onto case using (I) Screws.

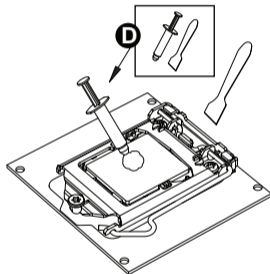
Thermal Compound Application

Step 1:



Remove protective film from copper base.

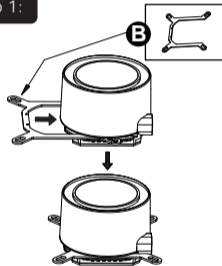
Step 2:



Apply thermal compound (included) onto the centre of the CPU.

INTEL Installation

Step 1:



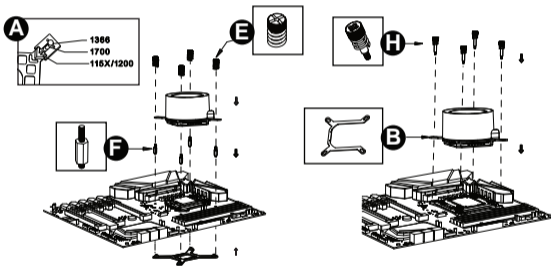
Installing the Intel mounting bracket.

INTEL Installation

Step 2:

Intel LGA 115X / 1200 / 1700

Intel LGA 2011

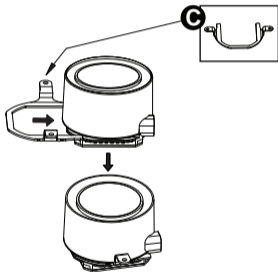


Secure the cooler.

AMD Installation

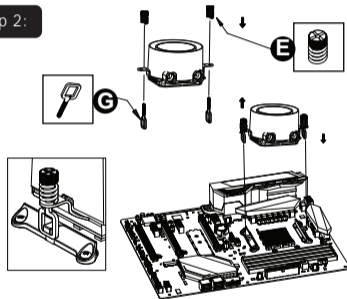
AMD Installation

Step 1:



Installing the AMD mounting bracket.

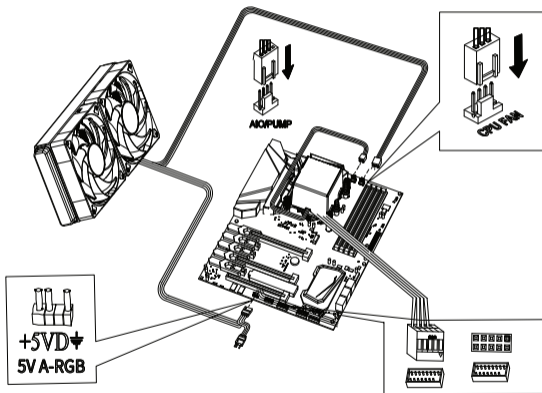
Step 2:



Secure the cooler.

**Please use the AMD mount included with your motherboard.*

Pump, LCD Screen & Fans Installation



Pump & LCD Screen Installation

- 1) Connect 3 pin pump header to CPUFAN_1 Header on your motherboard.
- 2) Connect the 9-pin USB header to any USB header on your motherboard.

Fans Installation

- 1) Connect the 4-pin fan connector to any fan header of your motherboard.
- 2) Connect the 3pin5v ARGB connector to the 3pin5v ARGB header of your motherboard.

**You may connect other ARGB devices through the 3pin5v splitter.*

T E C W A R E

www.tecware.co