

TECWARE

omni P12

FAN PACK

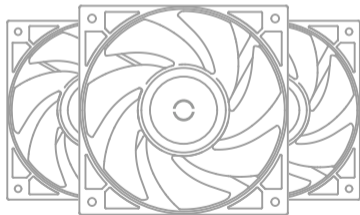
omni P14

FAN PACK

Quick Start Guide

Contents

- ◆ Components List ----- p.01
- ◆ Fan Installation ----- p.02
- ◆ Controller Installation ----- p.03



Components List

Omni Fan P12



Omni Fan P12 x3



Fan Screws x12

OR

Omni Fan P14



Omni Fan P14 x2



Fan Screws x8



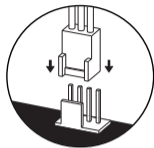
4-pin Fan connector



3-pin ARGB connector
(5V ARGB)

Fan Installation (with Omni Hub)

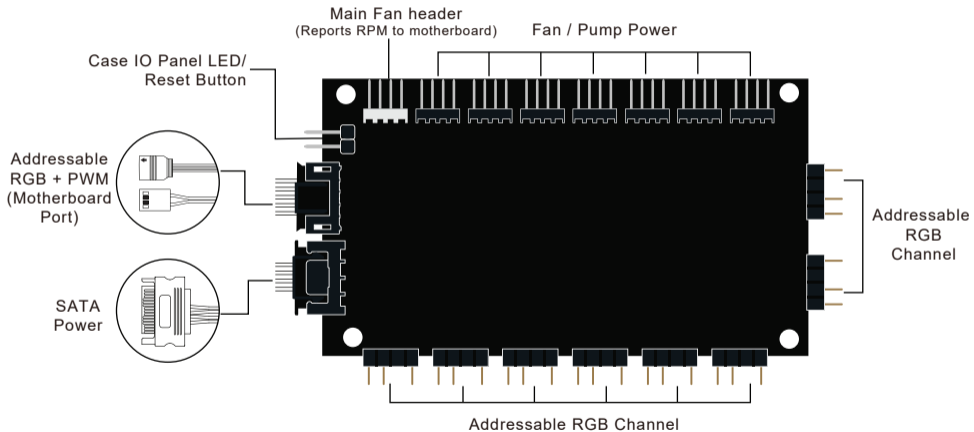
STEP 1 : Connect the 4-pin Fan and 3-pin ARGB connectors to your hub.
If only installing one fan, connect them to your motherboard.



STEP 2 : Connect Controller's SATA Power to PSU.
Connect ARGB header to motherboard. (if applicable)
Connect Case LED/Reset Button connector.

Note : Hold LED / reset button for 3sec to toggle between onboard controller mode and motherboard sync mode.

Controller Installation



TECWARE

www.tecware.co